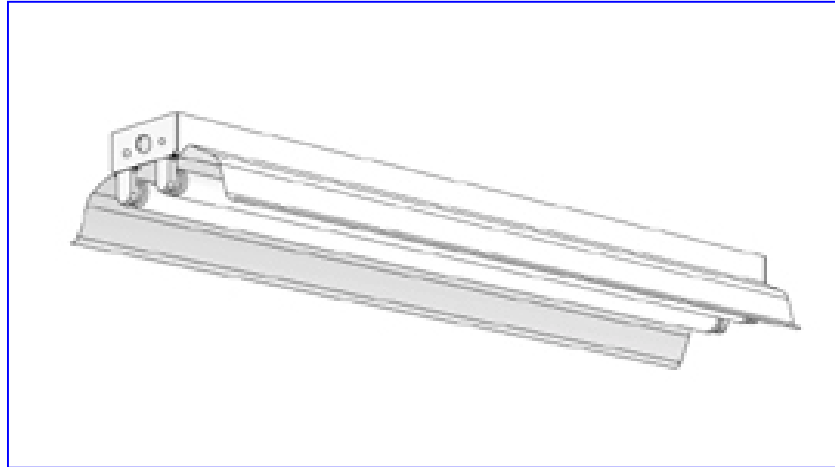
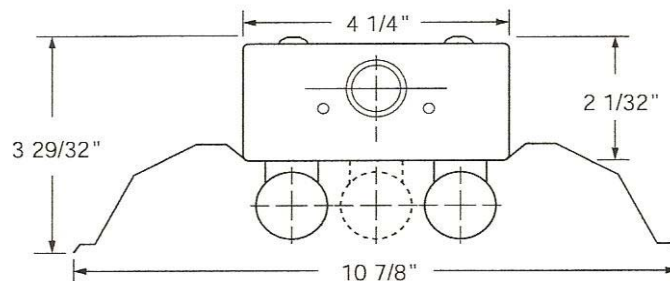


T8 and T12 Industrial Fixtures



General Description: The **IC Series** is a high quality, all-purpose shallow economy industrial fixture with symmetrical reflector. Side knockouts are included for convenience outlet, pull switch and conduit. Fixtures are designed for surface, stem or chain hanging and may hang as individual units or in continuous rows. **IC Series Fixtures** are assembled locally and are available in a variety of lamp and ballast configurations.

Ballast Specifications: Standard fixtures utilize instant start electronic ballasts. All ballasts carry a five year warranty. Universal voltage (120v -277v) ballasts are standard on all T8 fixtures. T12 fixtures require voltage specification (120v or 277v). All T8 ballasts have a min. ballast factor $>.87$ as ANSI specified, and a min. power factor $>98\%$. All ballasts have input frequency 50/60Hz, low THD: $<10\%$, and minimum starting temperature of 0 F (T8), and -20 F (T12HO). All ballasts are UL listed, and meet ANSI C82.11 specifications for electronic ballasts. High light output, low light output, rapid start and programmed rapid start ballasts available



Commercial Lighting Company

4930 Leary Ave NW

Seattle, Wa. 98107

Ph (206) 682-6385 (800) 992-LITE

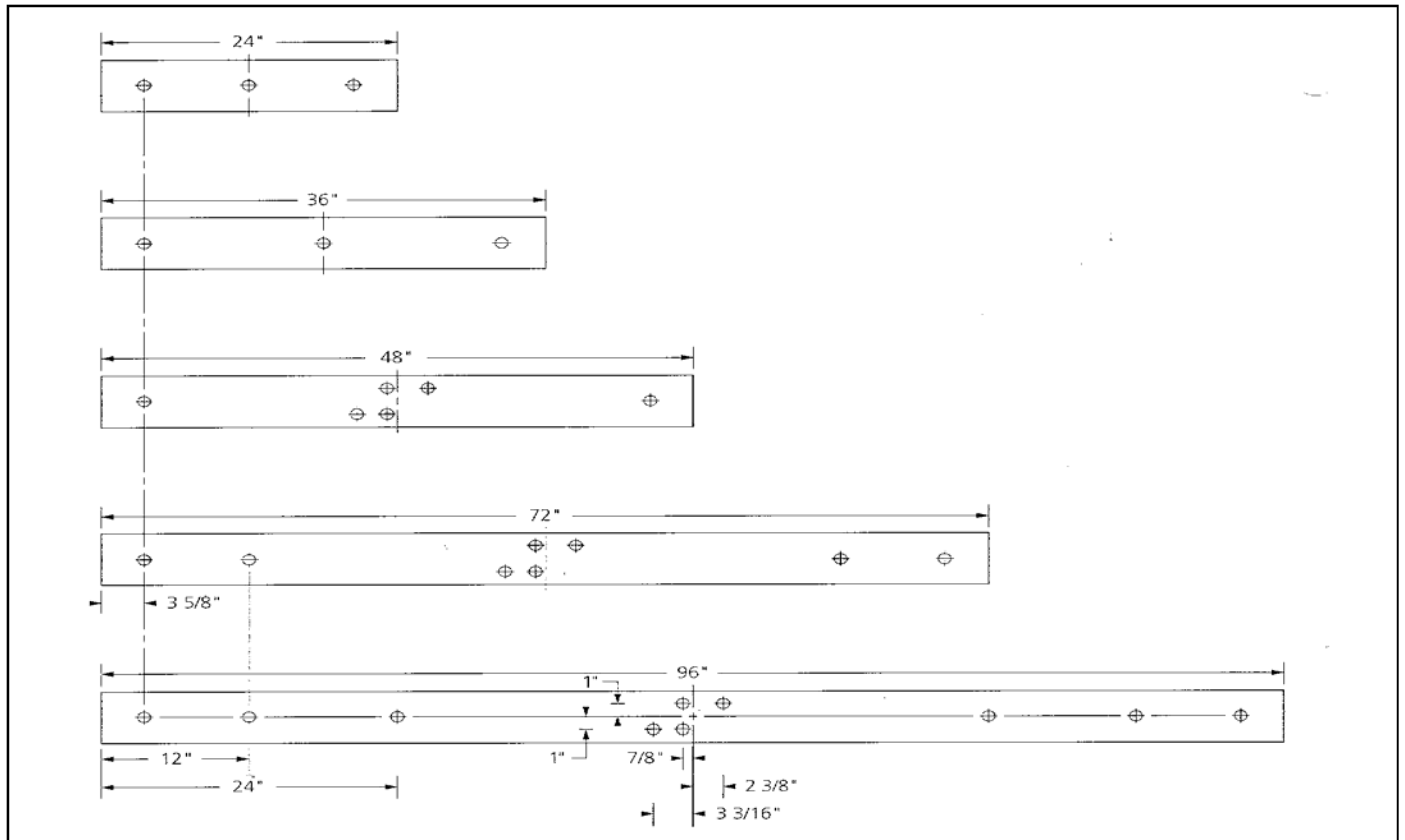
Fax (206) 624-6163

www.commerciallightingcompany.com

Ordering Information: Sample IC96T-432EBUNIV

<u>IC</u>	<u>96T</u>	<u>432</u>	<u>EB</u>	<u>UNIV</u>	<u>-UL</u>
Series IC	Length:	Lamps/Watts:	Ballast Type:	Voltage:	Uplight:
	48"	1, 2 or 3L/32w (T8)	EB: electronic	120v	
		1 or 2L/40w (T12)		277v	
		1, 2L /48w(T12HO)		UNIV	
	96"	1 or 2L/96w (T8)		UNIV-HLO	
		1 or 2L/96w (T12)			
		1 or 2L/96w(T12HO)			
	96"T	2 or 4LTAN/32w (T8)			

Series IC Industrial Fixture Back Plans



Commercial Lighting Company

4930 Leary Ave NW

Seattle, Wa. 98107

Ph (206) 682-6385 (800) 992-LITE

Fax (206) 624-6163

www.commerciallightingcompany.com