



UC Series Undercabinet Fixtures

General Description: UC Series T8 fixtures are ideal for undercabinet and workspace applications. Units may be supplied with rocker switch and power cord.

Ballast Specifications: Standard fixtures utilize instant start electronic ballasts. All ballasts carry a five year warranty. Universal voltage (120v -277v) ballasts are standard on all T8 fixtures. All T8 ballasts have a min. ballast factor $>.87$ as ANSI specified, and a min. power factor $>98\%$. All ballasts have input frequency 50/60Hz, low THD: $<10\%$, and minimum starting temperature of 0 F(-18 C). All ballasts are UL & cUL listed, and meet ANSI C82.11 specifications for electronic ballasts. High light output, low light output, rapid start and programmed rapid start ballasts available.



Commercial Lighting Company

4930 Leary Ave NW

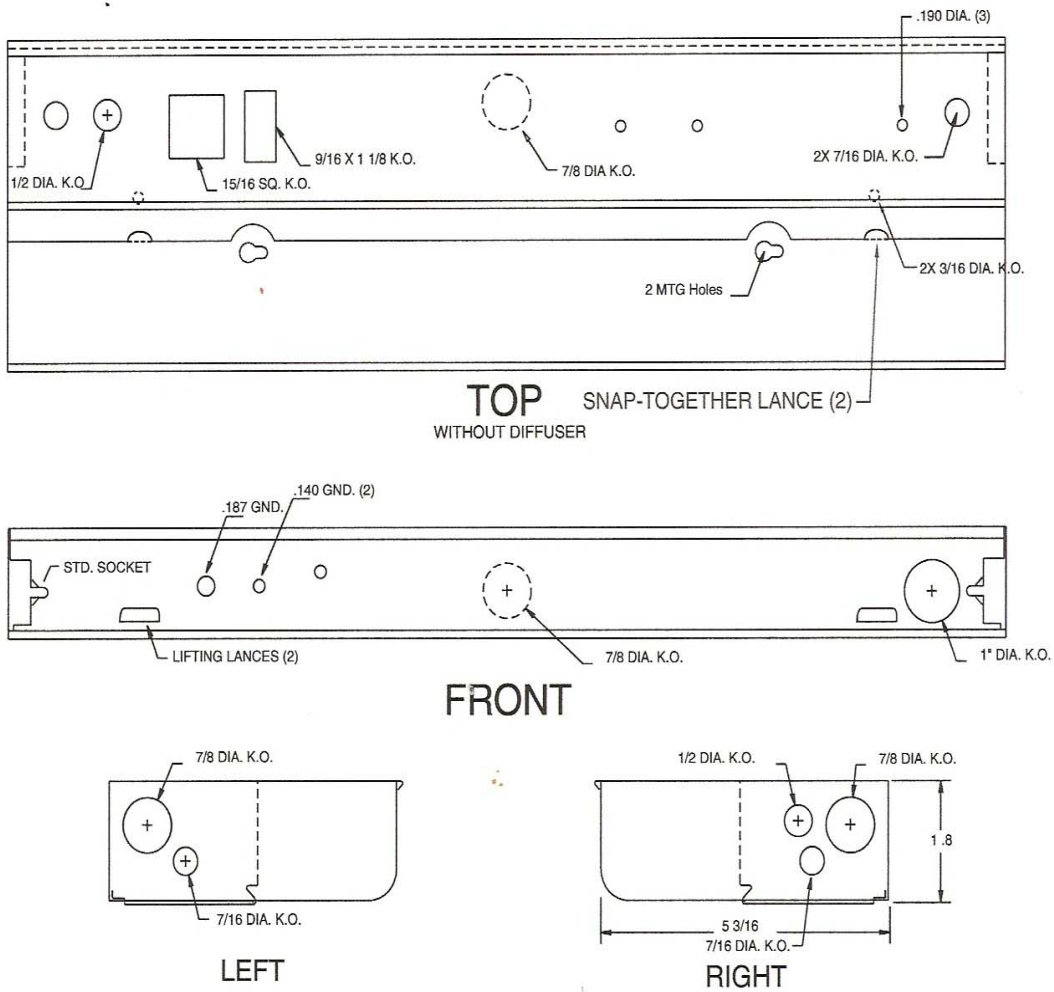
Seattle, Wa. 98107

Ph (206) 682-6385 (800) 992-LITE

Fax (206) 624-6163

www.commerciallightingcompany.com

<u>UC48</u>	<u>132</u>	<u>EB</u>	<u>UNIV</u>
UC24"	1L/17w (T8)	EB: electronic Ballast	UNIV: (120v-277v)
UC36"	1L/25w (T8)		
UC48"	1L/32w (T8)		



Commercial Lighting Company

4930 Leary Ave NW
 Seattle, Wa. 98107
 Ph (206) 682-6385
 Fax (206) 624-6163

www.commerciallightingcompany.com

