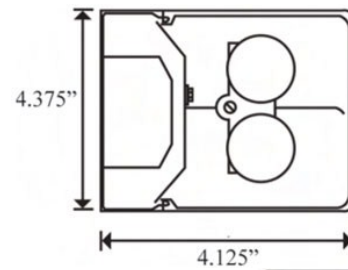


BF Fixture

Applications: Stairwells, Hallways, Bathrooms, new Ultra-Sonic Motion Sensor option



Side view dimensions
BF Fixture, wall mounted:
4.375" x 4.125"

General Description:

The BF Series Fixtures are an economical and efficient design for quality lighting of commercial, institutional and industrial facilities where economy, appearance and ultimate ease of installation and maintenance are desired. Also ideal when a low profile unit needs to meet limited space requirements.

Designed for stairwells, bathrooms, parking garages, hallways and open areas, these fixtures are available in 1-Lamp, 2-Lamp and 3 Lamp configurations with ceiling and wall mount fluorescent fixture options.

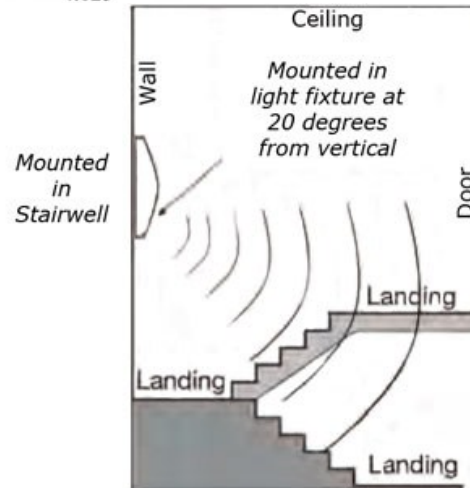
These efficient and versatile fluorescent fixtures can be configured with an energy saving ultra-sonic occupancy sensor for "lights on when you need them" technology. Battery backup option sold separately.

Electrical:

- UL Listed
- Ballast warranty
- Battery backup option sold separately

Benefits:

- Bi-level lighting control for up to 66% energy savings
- Use fewer fixtures, less replacement cost
- Low dirt depreciation
- Easy maintenance
- Durable construction
- Stairwell and bathroom fixture solution



Stairwell mounted BF Fixture diagram above illustrates the coverage provided, economically and efficiently to increase light distribution and illumination.

Features:

- Impact resistant lens options
- Time delay of 5-30 minutes
- Coverage at 8ft and 24ft in diameter
- Ultra-Sonic sensor detects sound waves with line of sight obstructions
- 2 Low Voltage Motion Sensor options

Housings: One piece molded, fiberglass-reinforced housing. Rounded fixture housing cleans easily

Mounting Options: Ceiling and wall mount

Occupancy Sensor Options:

- BF 505 Low Voltage Ultrasonic Occupancy Sensor
- BF 505C Low Voltage Ultrasonic Occupancy Sensor



COMMERCIAL LIGHTING COMPANY
Manufacturing & Assembly | Fluorescent Lighting Fixtures & Retrofit Kits

4930 Leary Avenue NW | Seattle, WA 98107
800-992-5483 toll free | 206-682-6385 office | 206-624-6163 fax

www.commerciallightingcompany.com



BF Fixture

Occupancy Sensor Options



BF 505 Low Voltage Ultrasonic Occupancy Sensor

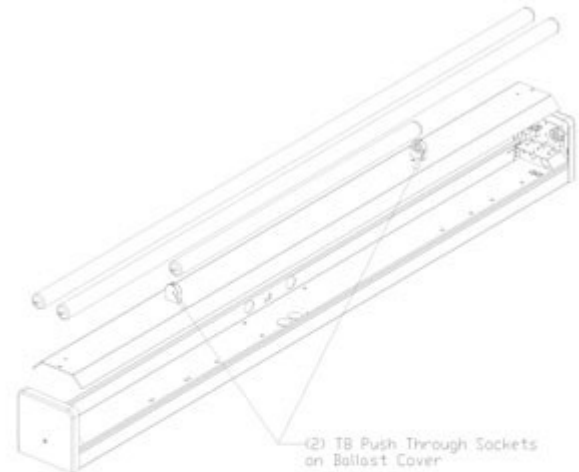
Voltage	24VDC
Current Consumption	43mA
Power Supply	BF-PP Fixture Power Pack
Time Delay	5-30 minutes
Coverage at 8' ht.	24' (731.5cm) diameter
Operating Temp	32-131°F (0-55°C)
Color	White
Dimensions	5.2" x 1.25" x .62"
Applications	Stairways



BF 505C Low Voltage Ultrasonic Occupancy Sensor

Voltage	24VDC
Current Consumption	43mA
Power Supply	BF-PP Fixture Power Pack
Time Delay	5-30 minutes
Coverage at 8' ht.	30' x 24' (457.2 x 365.7cm) diameter
Operating Temp	32-131°F (0-55°C)
Color	White
Dimensions	5.2" x 1.25" x .62"
Applications	Open Areas

*All BF Low Voltage Sensors require an BF-PP or other Watt Stopper Power Pack (ordered separately) to operate.



BF Fixture Diagram detailing fixture features

BF-PP Fixture Power Pack



COMMERCIAL LIGHTING COMPANY
Manufacturing & Assembly | Fluorescent Lighting Fixtures & Retrofit Kits

4930 Leary Avenue NW | Seattle, WA 98107
 800-992-5483 toll free | 206-682-6385 office | 206-624-6163 fax

www.commerciallightingcompany.com



BF Fixture

BF Fixture Ordering Guide

BF	Lamps	Lamp Type	Wattage	Fixture Length	Voltage	Lens	Ballast	Sensor	Sensor Switching Controlled
BF	1-Lamp 2-Lamp 3-Lamp	T8	117 (17 Watt) 217 125 (25 Watt) 225 132 (32 Watt) 232	24 = 2ft 36 = 3ft 48 = 4ft	Univ = Universal	WA = White Acrylic Lens CA = Clear Acrylic Prismatic Lens	EMB = Emergency Backup Ballast	SUS = Internal Ultrasonic Stairwell SUO = Internal Ultrasonic Open	1= 100% 2 = 25% 3 = 33% 5 = 50% 7 = 75% X = N/A



COMMERCIAL LIGHTING COMPANY
Manufacturing & Assembly | Fluorescent Lighting Fixtures & Retrofit Kits

4930 Leary Avenue NW | Seattle, WA 98107
 800-992-5483 toll free | 206-682-6385 office | 206-624-6163 fax

www.commerciallightingcompany.com

